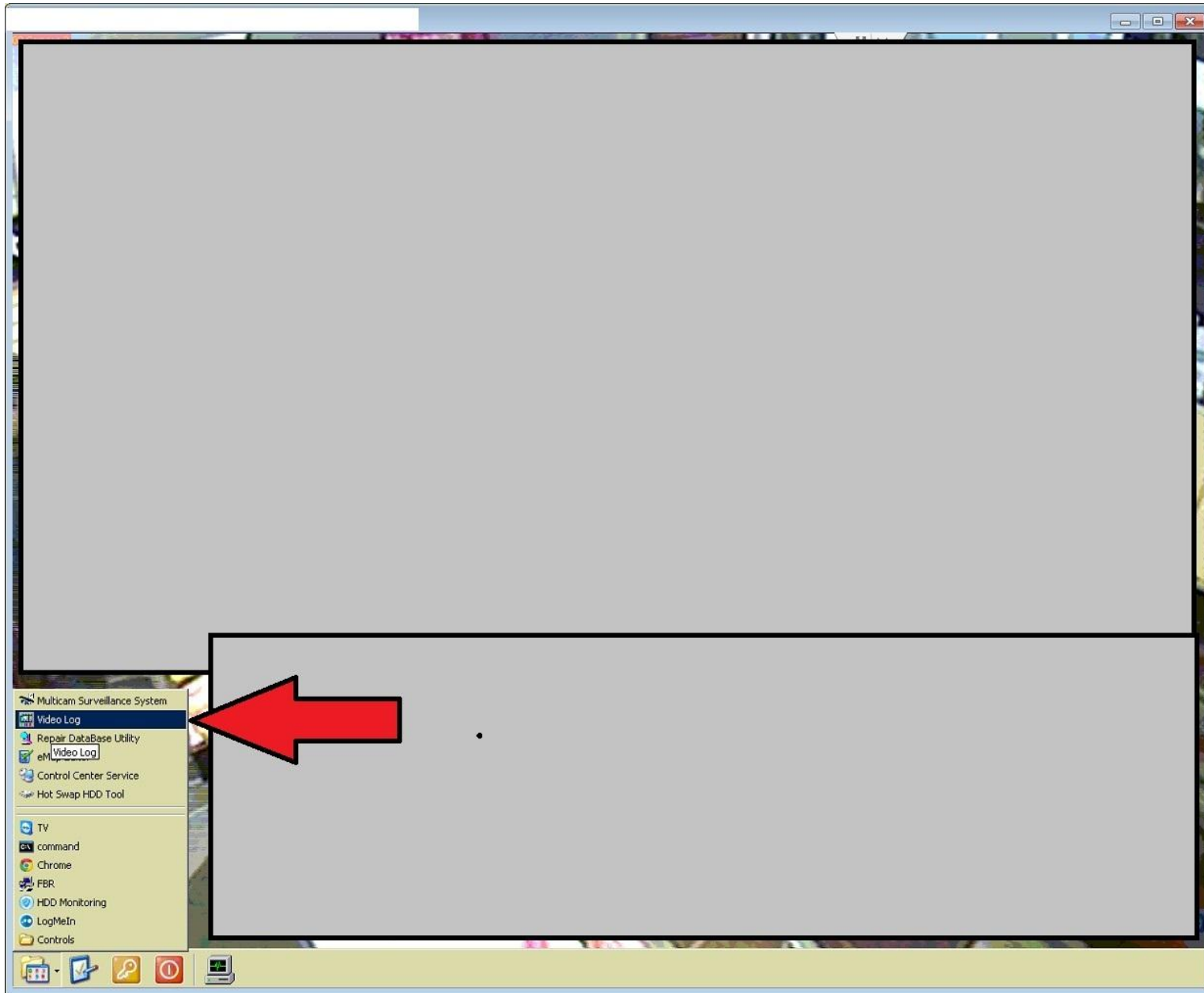
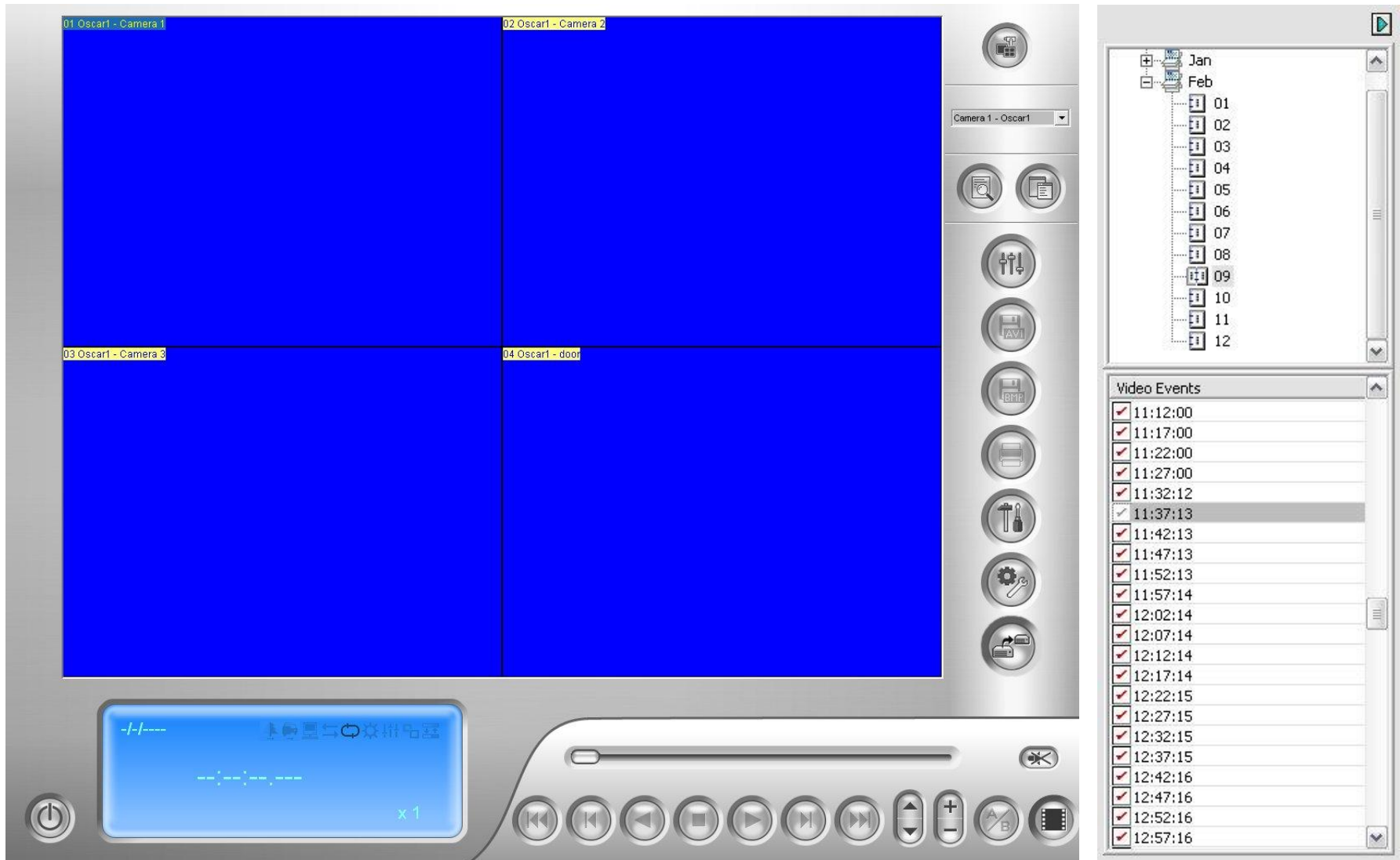


# How to use the GeoVision Archive



Click on Video Log to access the Archive



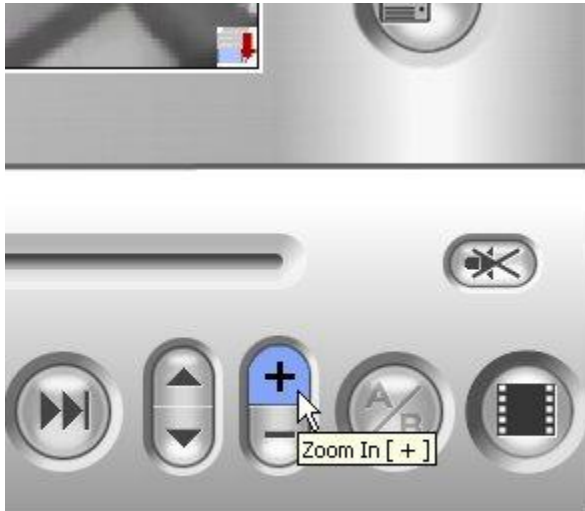
You can choose a date and time from the panel on the right



Click play to watch video



Click the buttons to speed up how fast or slow video plays



Zoom controls



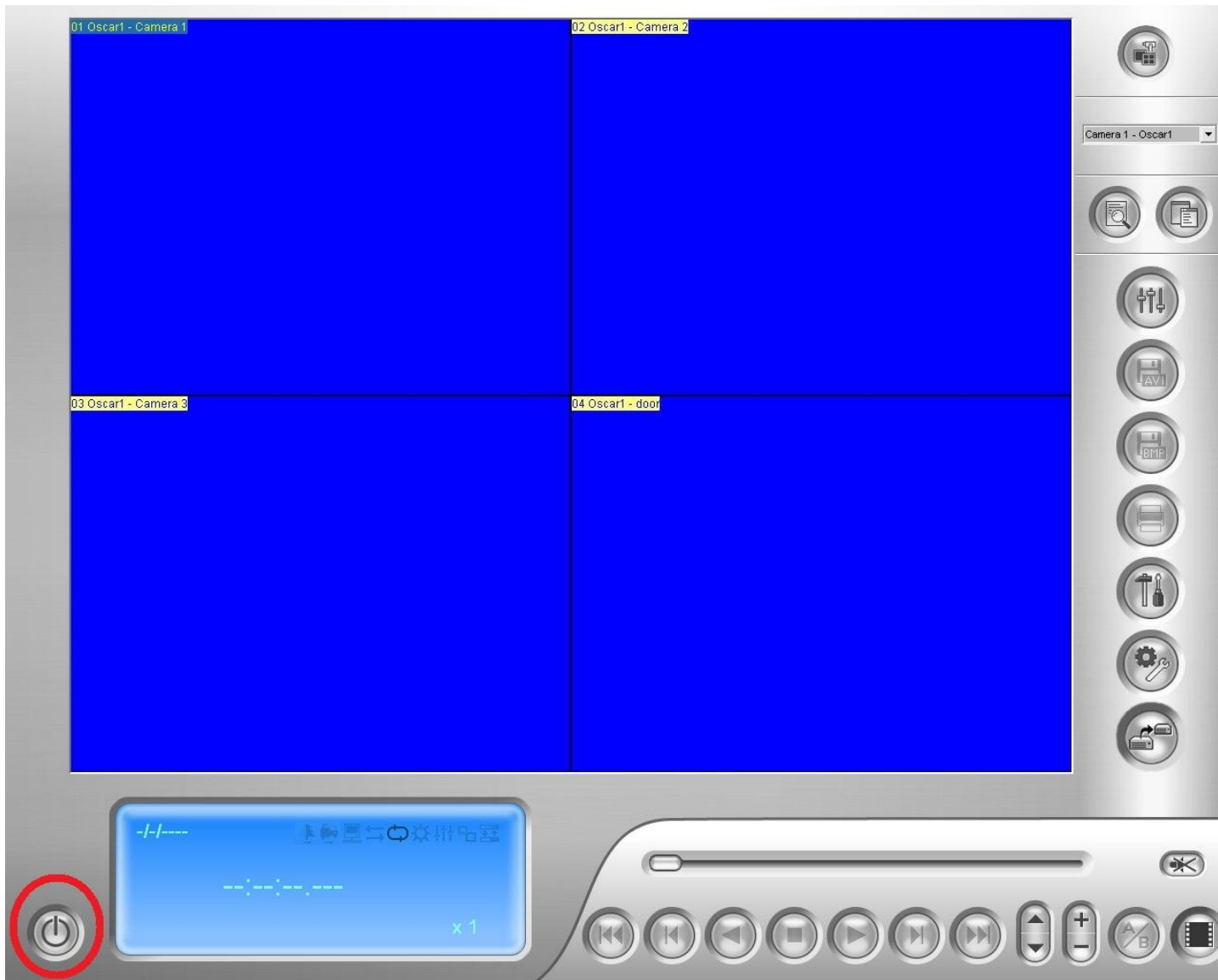
Plays video in reverse



Pauses video



You need to stop the video to choose a different date or time



Click the circled button and select exit\quit when done to return to live video